

Embedded Applet for OKI

The uniFLOW Embedded Applet for OKI provides a device-integrated solution enabling device locking, job release from a secure print queue, print, copy, fax and scan accounting, and integration with the native scan to myself. Managed by uniFLOW, OKI multifunctional devices are easily integrated within your print fleet.

One driver for all – the uniFLOW Universal Driver

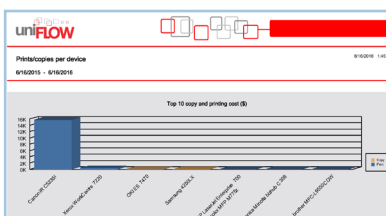
For submitting jobs to OKI devices users are provided with one single driver – the uniFLOW Universal Driver. Its unique technology allows users to choose any network printer from which to release a job as print jobs will follow the user from device to device, regardless of model or manufacturer. The uniFLOW Universal Driver ensures correct output as requested which reduces user dissatisfaction with the printing process and saves costs by cutting waste.

Release to any device



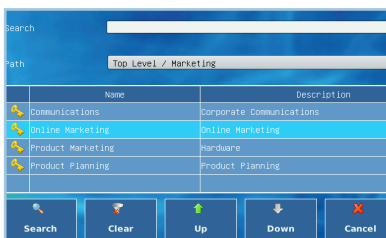
All print jobs are stored in a user's personal secure queue until they are ready to release them at the printer of their choice. This can be any networked printer with the uniFLOW embedded applet installed. Users can select which of their print jobs to release from a list displayed directly on the device screen or from the uniFLOW app running on their smartphone or tablet. Document finishing options such as black & white/color printing, simplex/duplex and stapling/hole punching can be changed at the device. If users change their mind about certain settings they do not have to submit the job again but just make the changes while at the printer and release the job afterwards.

Cost savings, accounting and reporting



Any secure print jobs that have not been collected from the OKI device within a predefined time are automatically deleted rather than sitting in a printer output tray. uniFLOW allows organizations to monitor savings made through improved printing practices e.g. deleting secure print jobs. With this information, better printing rules can be established to manage an entire device fleet or to create new rules and routing workflows that will decrease and optimize printing within the organization.

Multi-level cost center selection



uniFLOW allows organizations to assign costs to a multi-level cost center to allow chargeback to the appropriate customer or project code. Users can simply select which cost center to charge the job to on the screen displayed on the device control panel.

Native scanning

Scanning documents is an important part of users' daily work. Documents can easily be scanned to yourself with only a few clicks after logging on at the device. Within seconds the scans become available at the user's desk for further editing or distribution.



Immediate benefits

Increase document security



To prevent unauthorized use of the devices and to keep valuable and confidential information safe, uniFLOW requires users to identify themselves at a device. This keeps confidential documents out of the wrong hands.

Improve employee productivity



All print jobs, regardless of how they are submitted to uniFLOW, appear in the user's personal secure print queue and can be released from any device, regardless of model or manufacturer i.e. users can print securely using any connected device.

Control and reduce costs



Using the built-in reporting system, organizations can track and assess printing usage, allowing internal costs to be charged back correctly and current usage audited.

Help save the environment



uniFLOW can provide the analysis to help implement an environmental printing strategy, saving valuable trees and improving environmental performance.



Technical data

Core functionality

Device locking	✓
Print accounting ¹	✓
Copy accounting	✓
Scan accounting	✓
Fax accounting	✓
Single-level cost center selection	✓
Multi-level cost center selection	✓

Device authentication

PIN	✓
Username/ password	✓
Job code	✓
Card login (USB connection) via	
MiCard V3 Multi	⊗
MiCard PLUS/PLUS-2 V2	✓
MiCard MultiTech4-P/-PI/-P LEGIC	✓
MiCard MultiTech4-P/-PI BLE	✓
Anonymous login	⊗
Card registration on device	✓
Customizable login screen	⊗
Device function restriction based on user login	⊗

Secure print job submission

Submit via uniFLOW Universal Driver	✓
Driverless printing from OS-X® using AirPrint®	✓
Submit via email/ web browser	✓
Submit via native uniFLOW app	✓
Submit via Apple AirPrint®	✓
Submit via Google Cloud Print™	✓

Secure print release

Automatic job release after authentication	✓
Individual job selection/ deletion on device	✓
Thumbnail preview	⊗
Change finishing options before release	✓
Print shared jobs from archive	⊗

Native device scanning

Scan to myself	✓
Scan to folder	⊗
Scan to mail	⊗

Scanning and process automation

Personalized scan workflows	⊗
Advanced document processing	⊗
Scan to cloud-based destinations	⊗
Scan to DMS/ECM systems	⊗
Scan to CSI-based destinations	⊗

✓ = Available ⊗ = N/A

¹ Spool file accounting via Secure Output Printer



Supported devices

Devices supported by OKI Smart Extendable Platform version 1 (sXP1)

- MB760/770, ES7170 MFP series
- MC760/770/780, ES7470/7480 MFP series
- ES9460/9470 MFP series
- ES9455/9465/9475 series

Devices supported by OKI Smart Extendable Platform version 2 (sXP2)

- C542, ES5442 series
- MB492/562, ES4192/5162 series
- MC573, ES5473 MFP series
- MC853/873, ES8453/8473 series