



# UNIFLOW EMBEDDED APPLET FOR PLOTWAVE & COLORWAVE PRINTERS

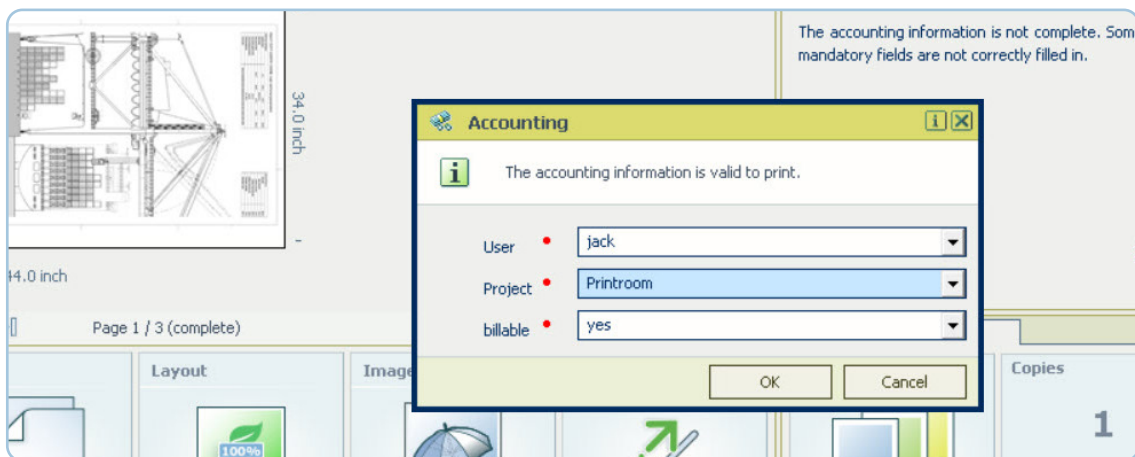
---

# uniFLOW Embedded Applet PlotWave & ColorWave printers

Many organizations employ a mixed fleet of printers, scanners and multifunctional devices. uniFLOW offers a wide range of embedded applets to provide a consistent user experience on small and large format devices across an organization. PlotWave and ColorWave printers are large format digital plotters that make printing, copying and scanning simpler than ever. The uniFLOW embedded applet for PlotWave and ColorWave printers enables users to securely release their drawings and administrators to track and monitor costs.

## Easy job submission

Users submit print jobs via the Driver Select for Microsoft Windows®. They apply all appropriate settings and can select a cost center so that costs can be assigned to a department, project or customer. On pressing “print”, the job is stored on the uniFLOW server, ready to be released at the device when required.



## Mobile printing

Mobility is essential in today's business environment, so users must be able to submit print jobs wherever they are. Users can submit print jobs via the Driver Select for Microsoft Windows® while working at their desk. uniFLOW also allows them to print from any location using a mobile device such as a smartphone or tablet. Temporary users and guests can also submit print jobs in the same way by sending the drawings they need to print to a specific email address. They will then receive an email containing a job code for identification at a device from which they can securely release their documents.



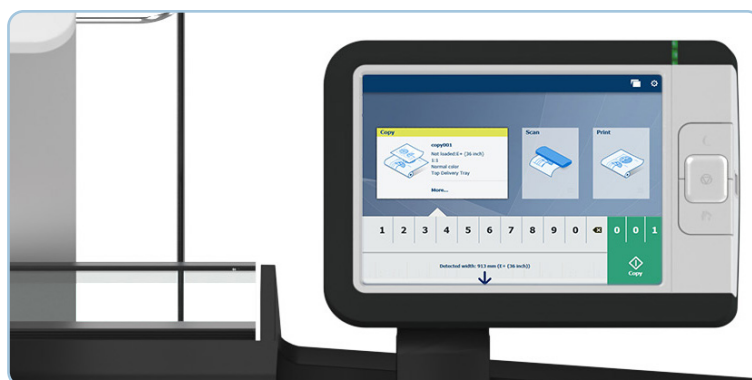
## Flexible user identification and secure job release

With the uniFLOW Embedded Applet, user identification is required to access devices and allow secure job release. Users benefit from multiple identification options, e.g. card, PIN code or job code. All print jobs, including jobs from mobile devices, are stored in a user's print queue displayed directly on the ClearConnect user interface.



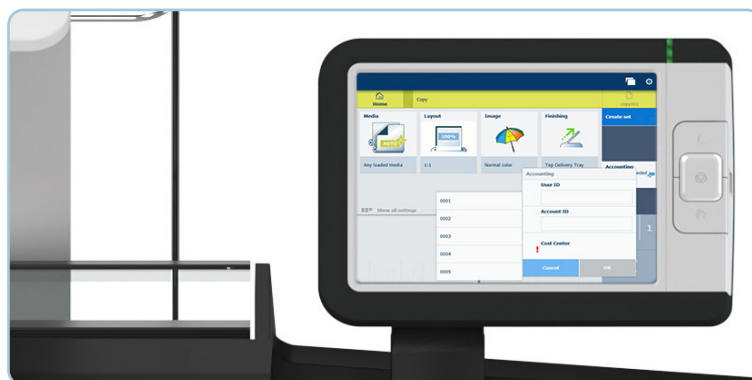
## Productive copying and scanning

uniFLOW integrates the embedded scan and copy functionality of PlotWave and ColorWave printers. Users can choose from various settings, e.g. file type, color mode and image quality. A scan preview means scanned images can be checked. Users can switch back to their print queues directly from the scan and copy mode.



## Multi-level cost center selection

With uniFLOW, all printing can be assigned to a cost center. Each organization can define multiple hierarchical levels of cost centers so that costs can be charged back to the corresponding customer, project, department or user. Users can select the appropriate cost center when submitting a print job or directly at the device upon login.



## Cost savings, accounting and reporting

uniFLOW will track every print, copy and scan job processed by the large format printers and generate automatic reports regularly or on demand.

# Key features

## Core functionality

Device locking	✓
Print accounting	✓
Copy accounting	✓
Scan accounting	✓
Single-level cost center selection	✓
Multi-level cost center selection	✓

## User identification

PIN	✓
Username/ password	✓
Job code	✓
Card login (USB connection) via	
MiCard Multi V3	✓
MiCard PLUS (Rev. 2)/PLUS-2 V2/PLUS BLE	✓
MiCard MultiTech4-P/-PI/-P LEGIC	✓
Anonymous login	✗
Card registration on device	✓
Customizable login screen	✓
Device function restriction based on user	✗

## Secure print job submission

Submit via Driver Select for Microsoft Windows®	✓
Submit via email/web browser	✓
Submit via native uniFLOW app	✓
Submit via Apple AirPrint®	✓
Submit via uniFLOW Universal Driver	✗

## Secure print release

Automatic job release after identification	✓
Individual job selection/ deletion on device	✓
Thumbnail preview	✗
Change finishing options before release	✗

## Scanning

Embedded scan functionality	✓
uniFLOW scanning features	✗



THE EMBEDDED APPLET ALLOWS FOR AN  
**EASY INTEGRATION** OF THESE DEVICES  
INTO YOUR MANAGED FLEET AND  
TO PROFIT FROM UNIFLOW'S **STRONG**  
**MULTI-VENDOR SUPPORT.**

---



## Increase document security

Regardless of how they are submitted to uniFLOW, all print jobs are stored in a user's secure print queue and can only be released when the user is at the printer and identifies.



## Improve employee productivity

One user interface for small and large format devices provides a simple print, copy and scan facility.



## Control and reduce costs

Organizations can track and assess print consumption using the built-in reporting system, allowing costs to be charged back correctly and current usage audited.



## Help save the environment

uniFLOW can facilitate an environmental printing strategy, saving valuable trees and improving environmental performance.



[www.uniflow.global](http://www.uniflow.global)  
[www.uniflowonline.com](http://www.uniflowonline.com)  
[www.syshub.global](http://www.syshub.global)